

# Electromagnetic Locks **Indoor NH Series**

Slide-in Mounting Plate Design, Safe and Secure



Slide-in mounting plate



The NH series electromagnetic locks feature a slide-in mounting plate design that simplifies the installation process and firmly secures the magnet. They are available for surface mount installations with a wide range of auxiliary mounting brackets allowing an easy installation on any kind of doors and door frames.

## Standard Features

- Slide-in mounting plate design for easy and secure installation
- Dual voltage 12/24VDC field selectable
- MOV prevents spike and surge current
- No residual magnetism
- Aluminum anodized casing (US28)

## Standard Options

- Built-in bond sensor
- Built-in door status sensor
- Bi-color status LED indicator
- Relock time delay
- Door held open alarm

## Patents, Approvals, and Listings

- UL 10B, UL 10C, ULC S104 listed : R21198
- CE: EC3D0908-02

## Indoor NH Series Electromagnetic Locks



## Functions for Indoor NH Series Electromagnetic Locks

### Armature Design

Mechanical kick-off device on armature plate ensures no residual magnetism.

### Bond Sensor (Option)

Indicates door locked and unlocked. SPDT rated: 0.5A/125VAC, 1A/24VDC

### Bi-Color Status LED Indicator (Option)

Included on bond sensor option, the visual LED indicates that door is locked or unlocked. Green: Unlocked; Red: Locked

### Door Held Open Alarm (Option)

Alarm for prolonged opening of the door. Time is adjustable from 1 to 20 seconds.

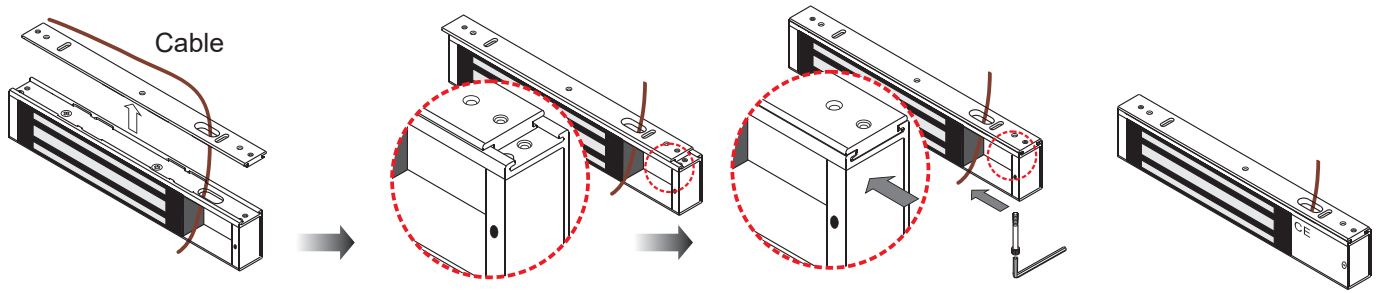
### Relock Time Delay (Option)

Field adjustable relock time delay of 1~80 seconds. Instant release with adjustable relock time.

### Door Status Sensor (Option)

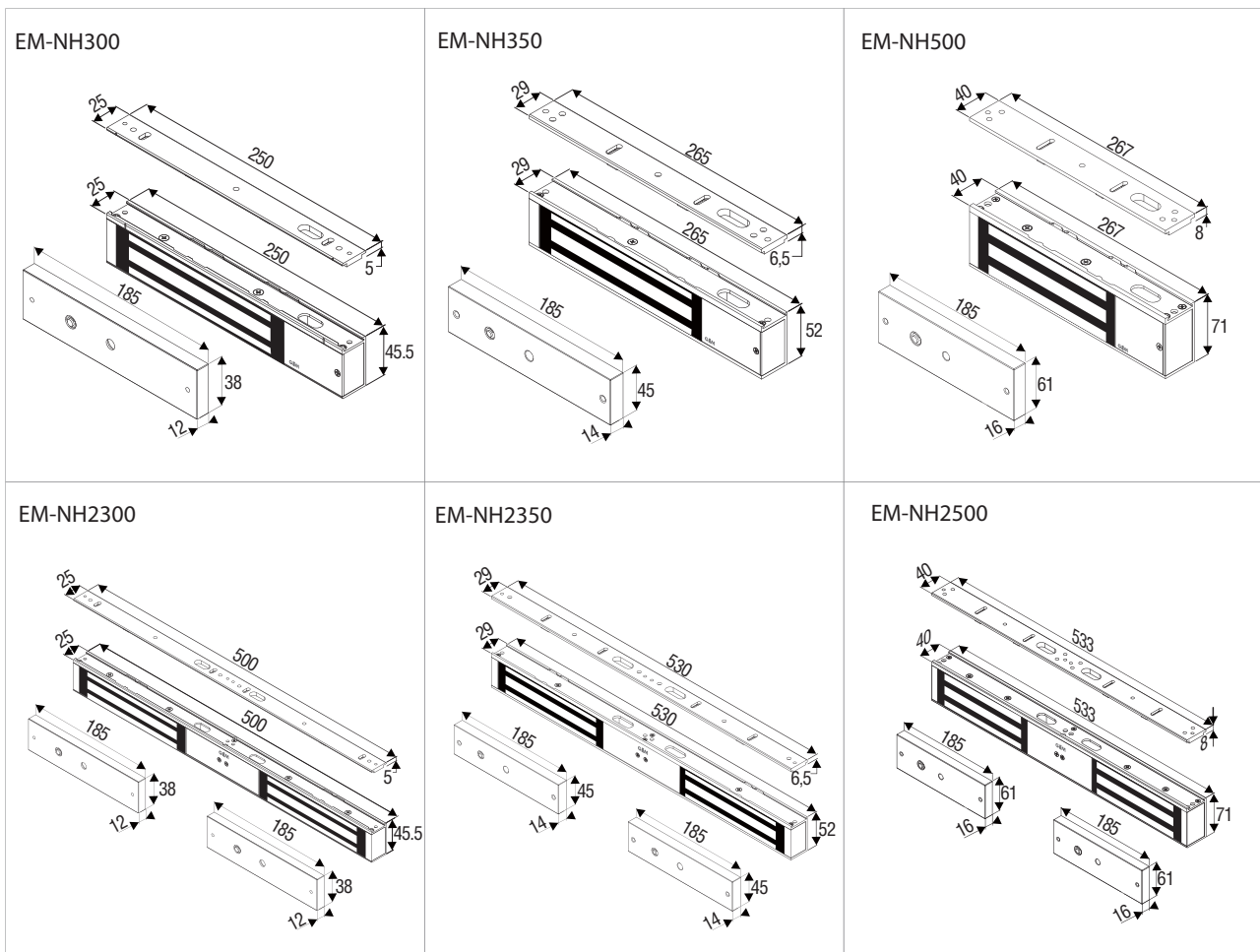
Indicates door open and door closed. Rated: 0.2A/12VDC

# Slide-in Mounting Plate Design









1. Pass the power cable through the mounting plate and the magnet housing.
2. Place the mounting plate above the magnet housing. Leave 1 cm from the edge of the magnet housing.
3. Slide the mounting plate into the magnet housing.
4. Secure the mounting plate to the magnet housing.

## Dimensions



All dimensions in mm

## Indoor NH Series Electromagnetic Locks

Models	Holding Force (lbs)	Voltage (VDC)	Current Draw	Standard Options	Optional Brackets		
					Narrow Frame/Outswing Door	Inswing Door	Glass Door
<b>Single Magnet</b>							
<b>EM-NH300</b> 	600	12/24	500mA/12VDC 250mA/24VDC	M, MTD, MDS, MDS-TD, DS	L-NH300 L-NH300AU	LZ-NH300N LZ-NH300NAU	UBK-013 Series UBK-600N Series
<b>EM-NH350</b> 	800	12/24	500mA/12VDC 250mA/24VDC	M, MDS	L-NH350M	LZ-NH350N	UBK-013
<b>EM-NH500</b> 	1200	12/24	500mA/12VDC 250mA/24VDC	M, MTD, MDS, MDS-TD, MBZ, TD	L-NH500 L-NH500AU	LZ-NH500N LZ-NH500NAU	—
<b>Double Magnets</b>							
<b>EM-NH2300</b> 	600 x 2	12/24	500mA x 2/12VDC 250mA x 2/24VDC	M, MTD, MDS, MDS-TD	L-NH2300	LZ-NH2300N	—
<b>EM-NH2350</b> 	800 x 2	12/24	500mA x 2/12VDC 250mA x 2/24VDC	M, MDS, MDS-TD	L-NH2350M	LZ-NH2350N	—
<b>EM-NH2500</b> 	1200 x 2	12/24	500mA x 2/12VDC 250mA x 2/24VDC	M, MTD, MDS, MBZ	L-NH2500	LZ-NH2500N	—

### Notes:

Standard models are all unmonitored

For more information on optional brackets or other mounting accessories, please refer to other GEM catalogues.

M: Bond sensor & Bi-color status LED indicator

DS: Door status sensor

TD: Relock time delay

BZ: Buzzer alarm (door held open alarm) (EM-NH500M-BZ, EM-NH2500MBZ)

M, DS, and MDS options passed UL Fire Tests of Door Assemblies.

### Warranty

The product is warranted against defects in material and workmanship while used in normal service for a period of 2 year from the date of sale to the original client. The GEM policy is one of continual development and improvement; therefore GEM reserves the right to change specifications without notice.