

GK1276/1296 Series Electric Rim Strikes

Installation Instructions

The GK1276/1296 series electric rim strikes are surface mounted and designed to accommodate rim exit devices with a Pullman latch. No cutting on the frame is required for installation. These strikes are field selectable for fail-safe or fail-secure mode and operate on dual voltage 12/24 VDC. Available with optional latch monitor.

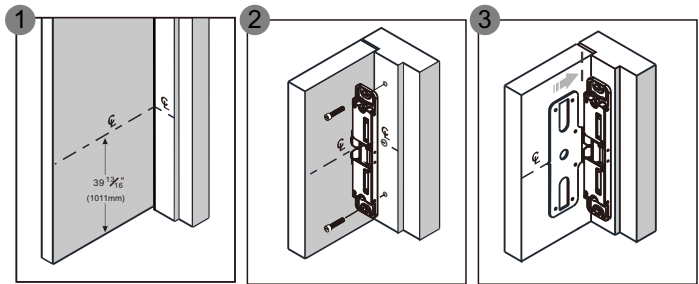
Specifications

| Model | GK1276 GK1276M | GK1296 GK1296M |
|---------------------------------|--|-------------------|
| Operating Voltage | 12/24VDC | |
| Current Draw | 540mA/12VDC, 270mA/24VDC | |
| Operating Temperature | 14°F to 120°F (-10°C~+49°C) | |
| Humidity | 0~85% non-condensing | |
| Static Strength | 1500 lbs (680Kg) | |
| Dynamic Strength | 70 ft-lbs | |
| Endurance Rating | 250,000 cycles (UL tested) 1,000,000 cycles (Factory tested) | |
| Lock Mode | Field selectable fail-safe or fail-secure | |
| Performance Level | Destructive Attack: Level I Line Security: Level I Standby Power: Level I Endurance: Level IV | |
| Finish | Brushed stainless steel (US32D) | |
| Frame Application | Metal or Wood | |
| Latch Throw (Housing Thickness) | 3/4" | 1/2" |

UL Requirements

- For indoor use only
- Wiring methods shall be in accordance with NFPA 70.
- The GK1276/1296 series are intended to be used with UL Listed Exit Hardware.
- The GK1276/1296 series shall not impair the operation of panic hardware mounted on the door.
- The GK1276/1296 series electric strikes are access control unit accessories, intended to be controlled by an access control system. The access control systems purpose is to provide a means for controlling the locking and unlocking of external and internal doors of a premise.

Surface Installation



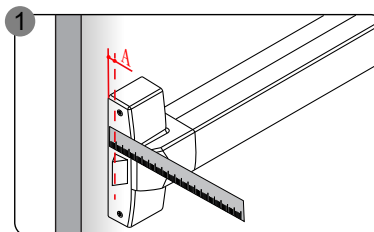
1 Measure 39 13/16" (1011mm) up from finished floor and mark strike centerline on door. Transfer centerline to frame.

2 Align strike on centerline and mark two slotted holes. Drill holes and install strike to frame.

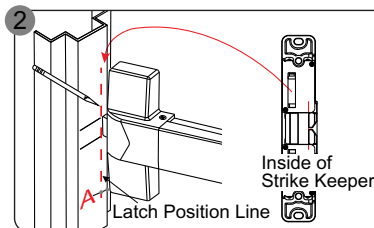
3 Align template on centerline and against strike.

Surface Installation (For Exit Device Already Installed)

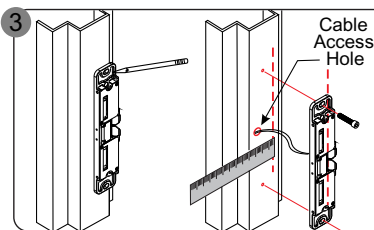
Model GK1296 is used as example below.



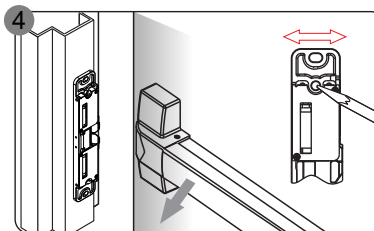
a. Measure the exit device latch position on the door.



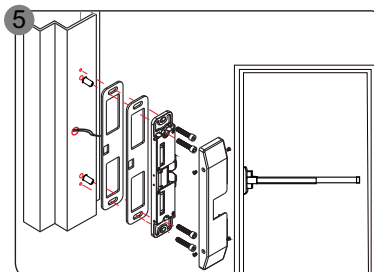
a. Close the door and mark latch position on the frame.
b. The latch position line will correspond with the inside of strike keeper as shown.



a. Position the strike on the frame according to the marked latch position.
b. Use the strike as a template; mark and drill cable access hole and two mounting holes.
c. Loosely mount the strike with Phillips flat head screws.

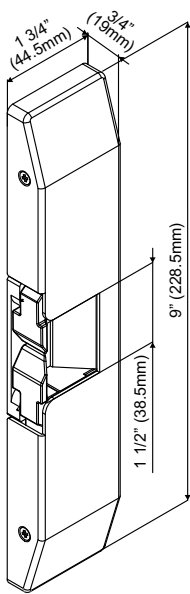


a. Check latchbolt interaction and adjust the strike horizontally until the door latches properly.
b. Tighten the two mounting screws and mark remaining screw holes.

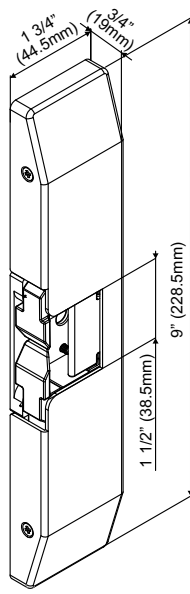


a. Remove the strike and drill holes.
b. Connect the wires.
c. Insert the blind nuts into the holes and re-install the strike.
d. Add spacers to adjust the gap between strike and exit device if necessary.
e. Permanently secure the strike with the hex socket cap screws into the blind nuts.

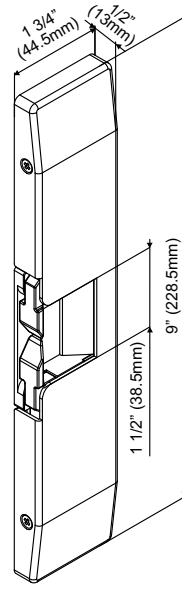
Dimensions



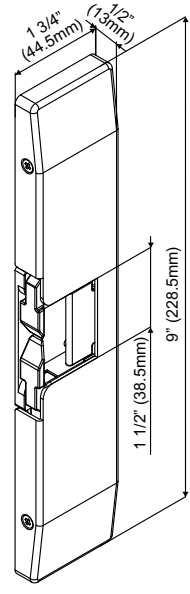
GK1276



GK1276M
(Model with Latch Monitor)



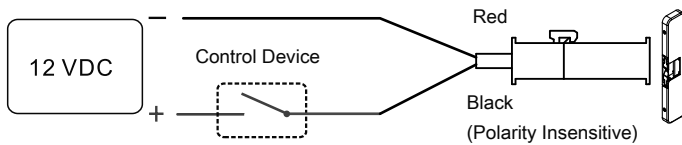
GK1296



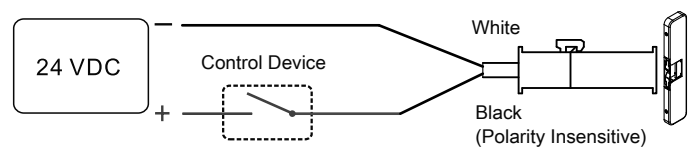
GK1296M
(Model with Latch Monitor)

Wiring Diagrams

For 12VDC operation:



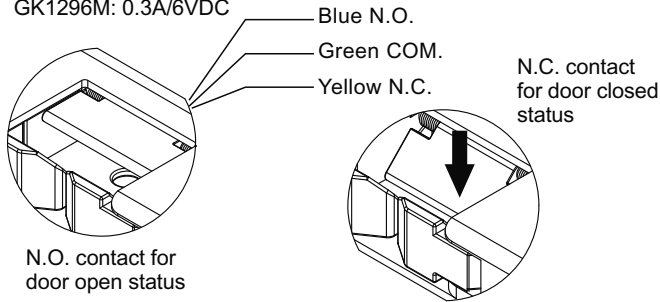
For 24VDC operation:



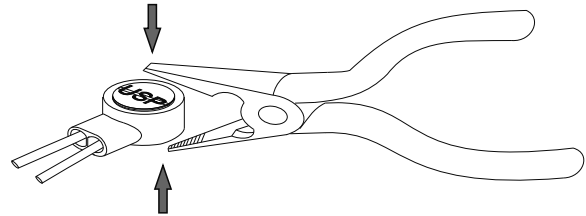
Latch Monitor (Option)

Contact Rating

GK1276M: 1.5A/40VDC
GK1296M: 0.3A/6VDC



Installing the Crimp Connectors



Place the wire inside the connector and use pliers to press down on the head of the connector evenly.

Changing Fail-Safe / Fail-Secure

Remove locking screw #1, loosen, slide and tighten sliding screw #2. Reinsert and tighten locking screw #1 to the desired fail-safe or fail-secure setting.

