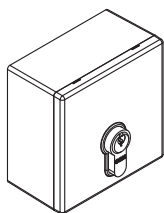


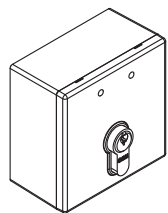
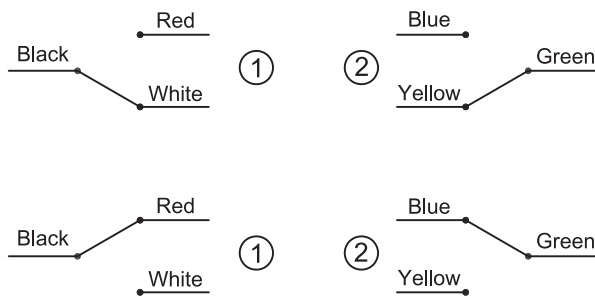
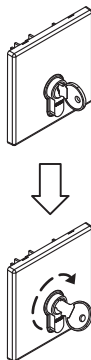
EURO SIZE KEY SWITCH USER MANUAL

Key switches are installed in secure locations outside wired, in parallel or series with the power supply and the electromagnetic lock. If the electromagnetic lock cannot be opened due to failure of the proximity reader or other incidents, the user can switch between normally closed (N.C.) and normally open (N.O.) contacts by the key, forcing the door to open. This acts as a backup to access control systems.



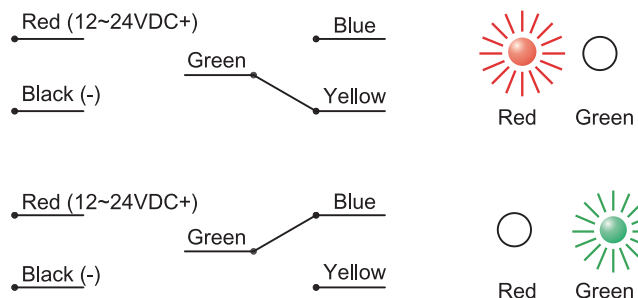
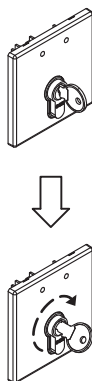
KS-800-S-C

- (45mm length European standard cylinder included)
- Stainless Steel Faceplate
- Maintained DPDT
- Switch rating: 5A/125VAC
- (Optional: Momentary KS-810 Series)



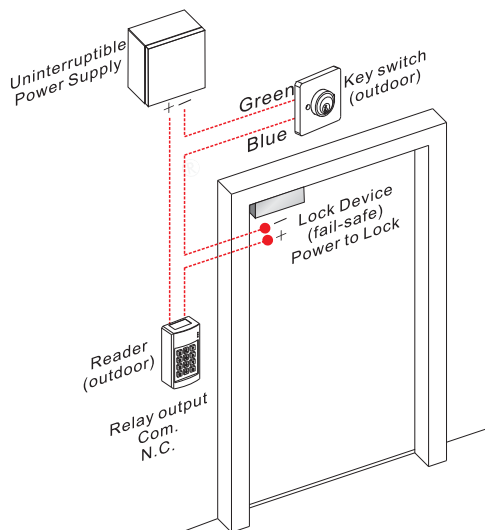
KS-800LD-S-C

- (45mm length European standard cylinder included)
- Stainless Steel Faceplate
- Power Input: 12~24VDC (LED Indicator)
- Maintained SPDT
- Switch rating: 5A/125VAC
- (Optional: Momentary KS-810LD Series)



Application

The connection for fail-safe Lock devices:



The connection for fail-secure Lock devices:

