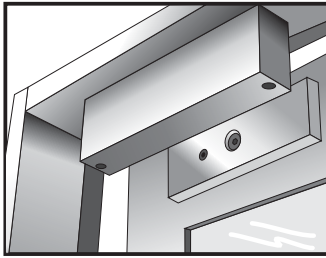


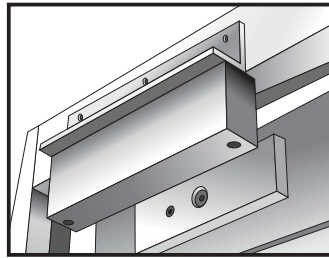
Electromagnetic Lock Installation Instruction (Waterproof Series)

Optional Bracket

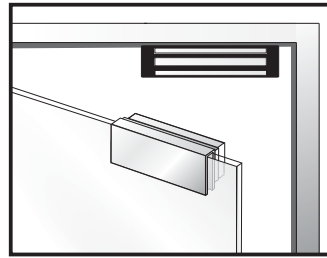
Brackets installation are according to door swing direction and door frame type , e.g. narrow frame door , frameless glass door , inswing door , etc.



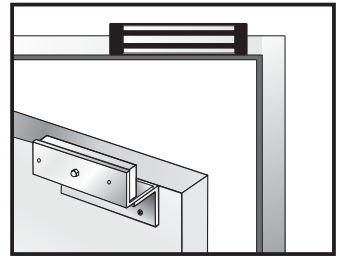
Regular Installation
(outswing door)



L-bracket for
narrow frames (optional)



U-bracket for frameless
glass doors (optional)



LZ-bracket for
inswing doors (optional)

Regular Installation

① Fold the mounting template 90°

Template

② Place the template to the proper position of the door and frame .Mark the hole positions of the template to the door and frame

③ Drill the holes according to the marks.

④ Armature Plate

Please install the armature plate as illustrated here. (Dimensions of the holes are depending on the door types as illustrated below.)

<p>Hollow Metal Door</p> <p>12.7mm 8mm</p>	<p>Reinforced Door</p> <p>6.8mm for M8-1.25 thread</p>	<p>Solid Door</p> <p>12.7mm 8mm 36mm</p>
--	--	--

Drill a Ø8mm hole through door, on closing side enlarge to Ø12.7mm by a sexnut blot on the opening side.

Drill a Ø6.8mm hole and tap on closing side a M8x1.25 thread.

Drill a Ø8mm hole through door on closing side enlarge to Ø 12.7mm, by a sexnut blot on the opening side. The depth is 36mm.

Recommendation:

For Micro EM-locks (300 LBS), maximum thickness of door is 44 mm.

For Mini EM-locks (600 LBS), maximum thickness of door is 50 mm.

For Midi EM-locks (800 LBS), maximum thickness of door is 48 mm.

For Maxi EM-locks (1200 LBS), maximum thickness of door is 46 mm.

⑤ Fasten the mounting plate with the mounting screws. The position of the mounting plate should be adjustable.

⑥ 9.4mm holes for M6 Blind Nuts.
7mm holes for M5 Blind Nuts.

⑦ Use the screws to permanently mount the mounting plate, then mount the magnet with the fixing screws provided.

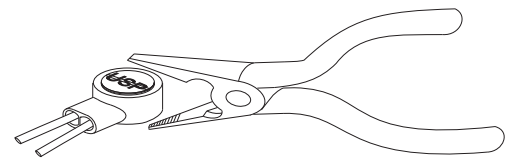
⑧ Power

Outswing

Holding Force

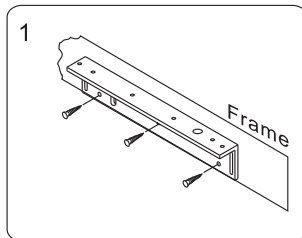
Connect the power and test the unit. Insert the anti-tamper caps into the holes of mounting screws.

Butt Splice(IDC) Connector

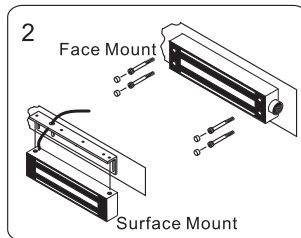


Using crimpers or pliers and pressing the header of connector down to even position.

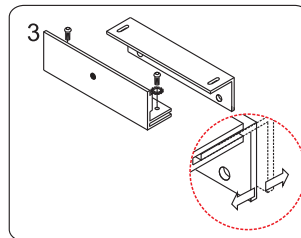
LZ or Z bracket for inswing doors



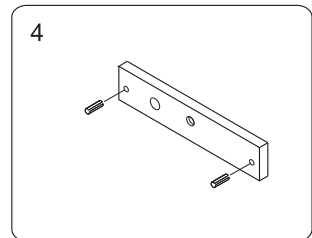
Find a mounting position on the door frame for the L bracket. Make sure that the door is still closeable.



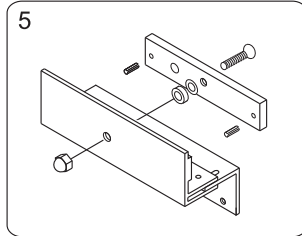
Use the fixing bolts to tighten the electromagnetic lock on L bracket. (For face mount, the magnetic lock can be mounted directly on the door frame).



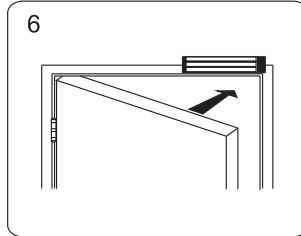
Assemble the Z bracket, and make sure that the Z bracket is adjustable.



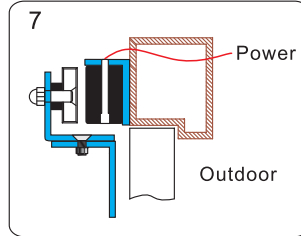
Insert the guide pins into the armature plate.



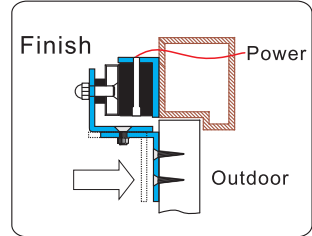
Fasten the armature plate to the Z bracket (Must add rubber washer).



Close the door and connect the power.



After the maglock attracts the armature adjust plate, the Z bracket to fit the door.



Fasten the Z bracket to the door.

Connecting Diagram

Wire Leads (Power input is polarity free)	Power Input	Bond sensor output	Digram	Bond sensor output
2 Wire Leads Single voltage (Power input is polarity free)	12VDC or 24VDC	—	Parallel Connection: 12VDC 	Series Connection: 24VDC
4 Wire Leads Single voltage (Power input is polarity free)		✓		Indicates the locked (N.O. contact) or unlocked (N.C. contact) status (Relay rated: 0.5A/20VDC)
5 Wire Leads Single voltage (Power input is polarity free)		✓		Indicates the locked (N.O. contact) or unlocked (N.C. contact) status (Relay rated: 0.5A/20VDC)
4 Wire Leads Dual voltage (Power input is polarity free)	12VDC / 24VDC	—	Parallel Connection: 12VDC 	Series Connection: 24VDC
6 Wire Leads Dual voltage (Power input is polarity free)		✓		Indicates the locked (N.O. contact) or unlocked (N.C. contact) status (Relay rated: 0.5A/20VDC)
7 Wire Leads Dual voltage (Power input is polarity free)		✓		Indicates the locked (N.O. contact) or unlocked (N.C. contact) status (Relay rated: 0.5A/20VDC)