

Electric Strike Installation Instructions GK460 Series

Specifications The strike is polarity insensitive

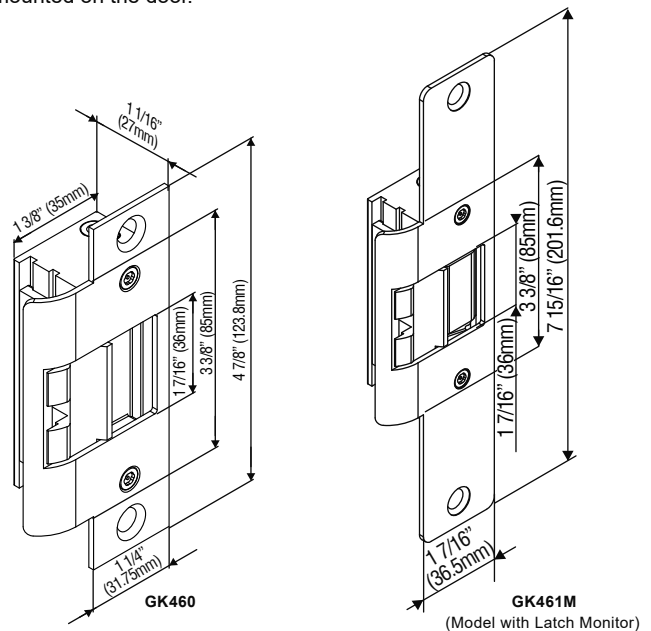
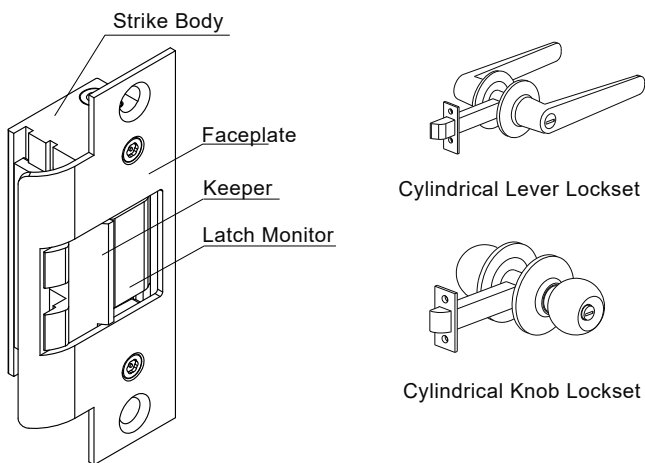
GK460 series of electric strikes are designed for use with cylindrical locksets and accommodate latchbolts up to 9/16" throw. The strikes can be configured to fail-safe or fail-secure on site.

Operating Voltage	12/24VDC
Current Draw	300mA/12VDC, 150mA/24VDC
Operating Temperature	+ 14°F to + 120°F (-10°C to + 49°C)
Humidity	0% to 85% Non-condensing
Latch Throw	9/16" (15mm) maximum
Keeper Width	1 7/16" (36mm)
Static Strength	1,500 lbs (680Kg)
Dynamic Strength	70 ft-lbs
Endurance	250,000 cycles (UL tested) 1,000,000 cycles (Factory tested)
Performance Level	Destructive Attack: Level 1 Line Security: Level 1 Standby Power: Level 1 Endurance: Level IV

Model	Latch Monitor	Body Construction	Frame	Latch Throw
GK460	—	Zinc Alloy	Hollow Metal	9/16" (15mm)
GK460M	●		Wood	
GK461	—			
GK461M	●			

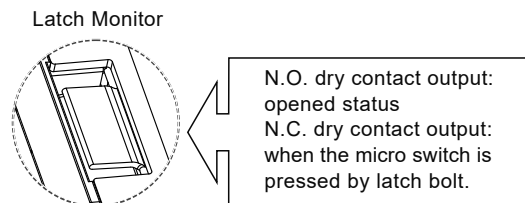
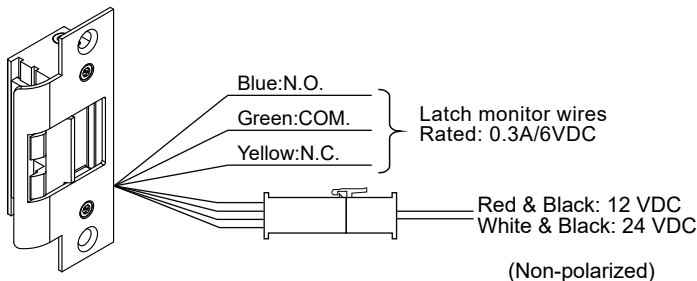
UL Requirements

- For Indoor Use Only.
- Wiring methods shall be in accordance with NFPA70.
- The GK460/461 series is intended to be used with UL Listed Exit Hardware.
- The GK460/461 series shall not impair the intended operation of an emergency exit.
- The GK460/461 series shall not impair the operation of panic hardware mounted on the door.



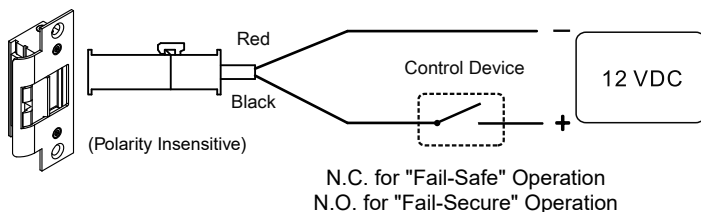
Wiring Diagrams

Latch Monitor Wires

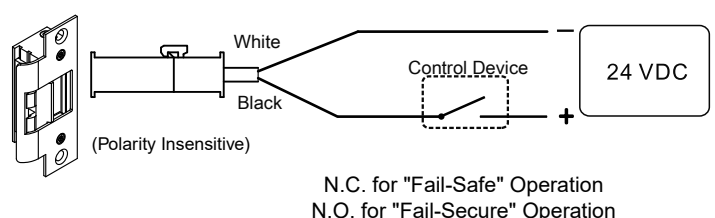


Dual Voltage (12V/24V)

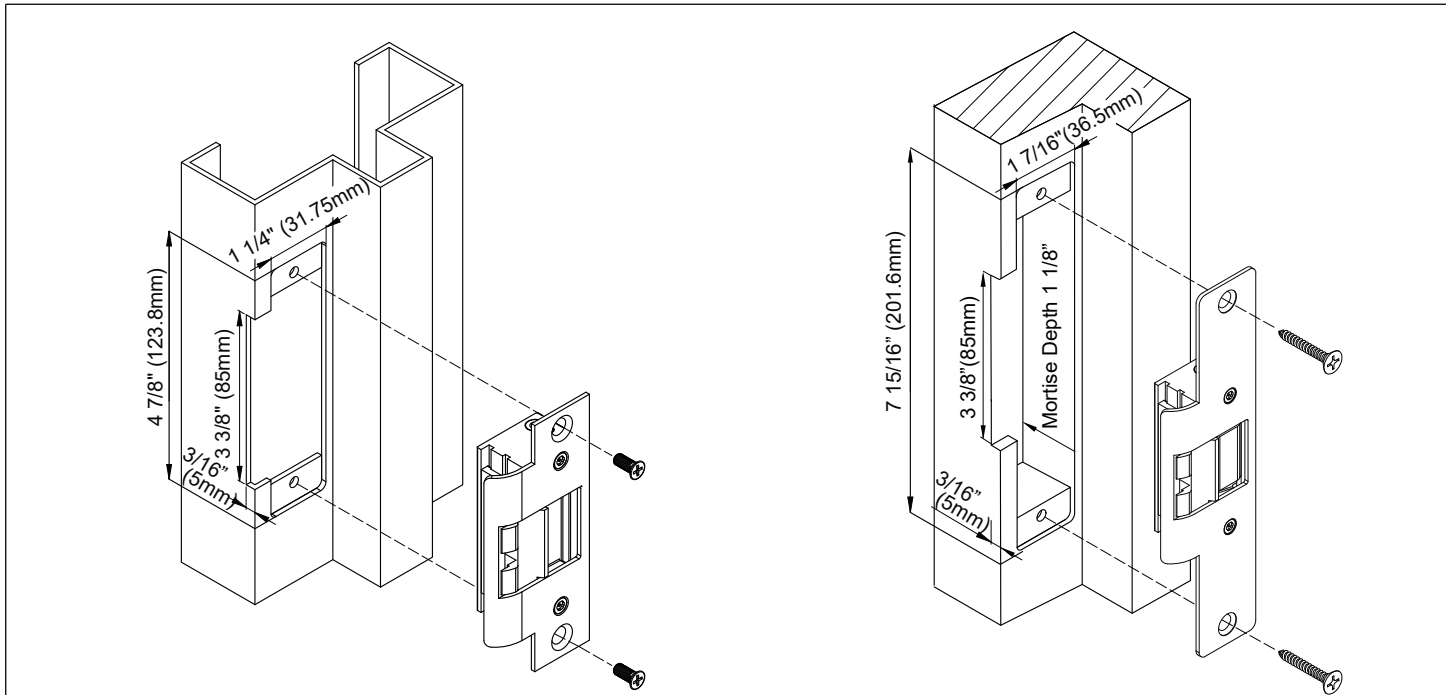
For 12VDC Operation:



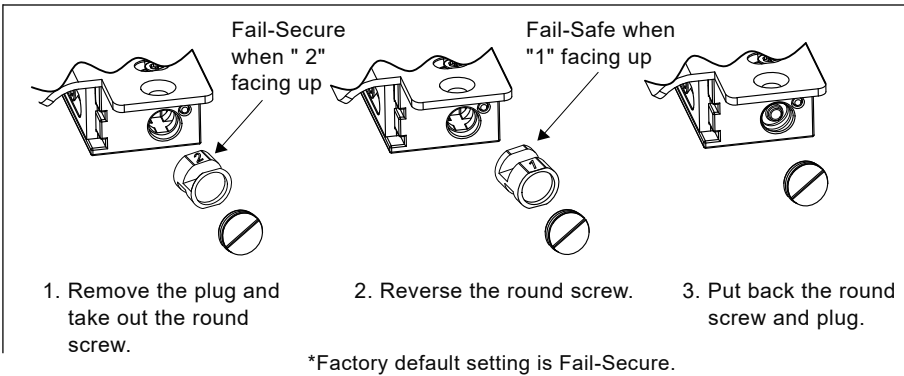
For 24VDC Operation:



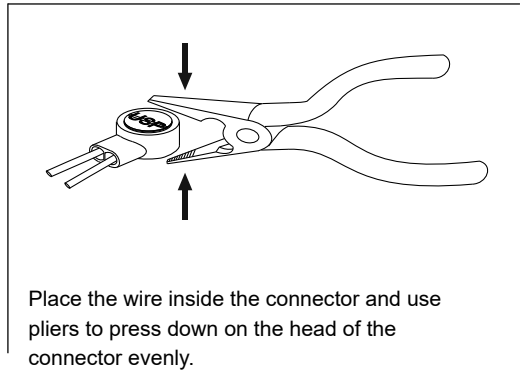
Installation on Wood and Hollow Metal Frame:



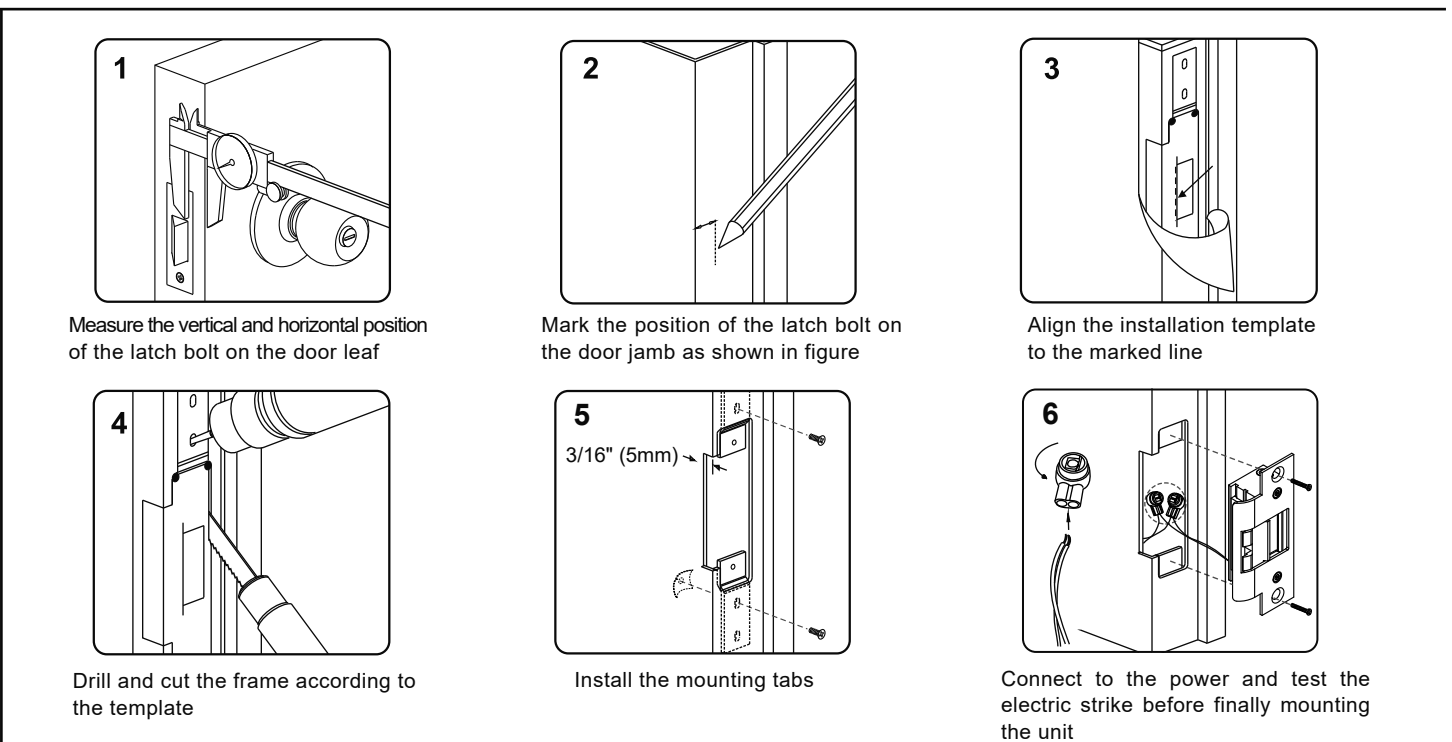
Fail-Safe / Fail-Secure Reversible



Installing the Crimp Connectors



Installation Steps



Note

Please ensure that there is no back pressure on the keeper from the latch. As with most strikes this may cause the strike to bind and malfunction. It could also cause undo pressure on the solenoid and eventual failure of the strike.